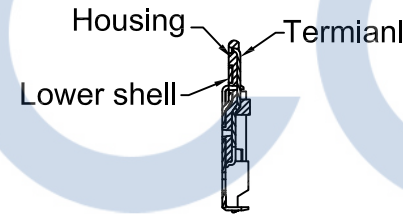
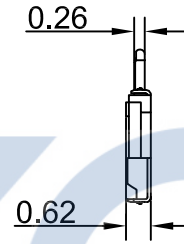
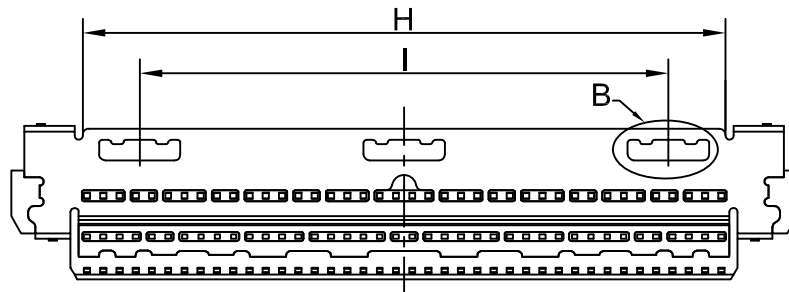
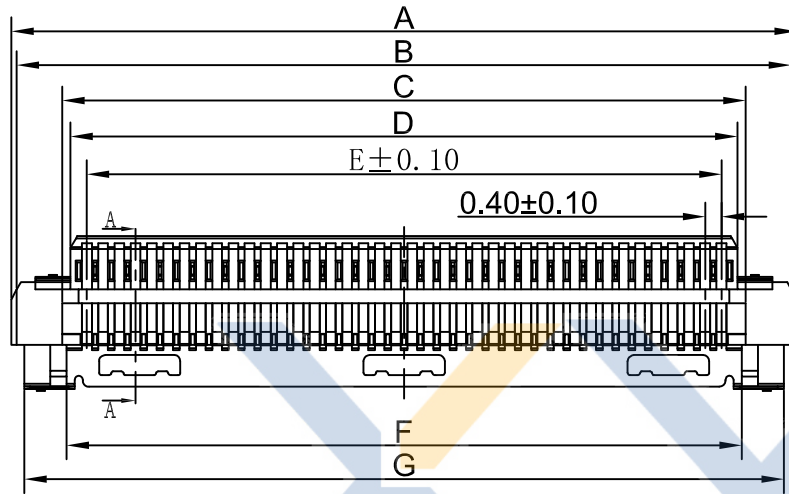


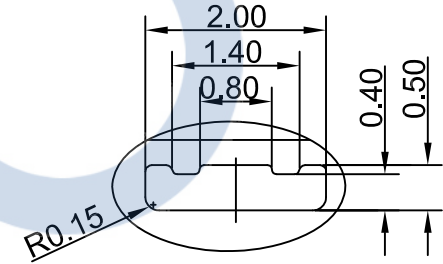
DRAWING FOR CUSTOMER

- NOTES:
- Material & Finish;
 - Housing:LCP,UL94V-0,Black
 - Contact:Phosphor Bronze;Au plated 3~5u" on the contact area,and Au plated 1~3u" on the solder area,over Nickle underplating 50u".
 - Shell:Phosphor Bronze;Au plated 1~3u" over Nickel underplating 50u"min.
 - Recommended cable:
 - SGC. :AWG#40,42,44,46
 - DISCRETE:AWG#36
 - It can be used the SGC cable and the TEFLON cable together.



KB402 - XX H X A

Pin No. Version
Housing Mold No.



SECTION A-A

SECTION B-B

Precision Connectors

Pin	A	B	C	D	E	F	G	H	I
40	19.32	19.04	16.80	16.40	15.60	16.60	18.68	15.80	13.00
30	15.32	15.04	12.80	12.40	11.60	12.60	14.68	11.80	9.00

XYCO PRECISION CONNECTORS

TEL: 0769-8297 9981/2/3 <http://www.XYCO.com.cn>

2013-04-13		A		KB402-XXHXA		譚火秦		TOLERANCE 公差		DRAWING 設計者 譚火秦		KB402-XXHXA		UNIT 單位		mm		PRODUCT NAME 產品名稱		I-PEX 0.40mm 20473	
DATE 日期	VER 版本	CHANGE HISTORY 變更歷史		CHANGED NAME 修改後料號		DRAWING 變更者 譚火秦		.X=±0.30	.XX=±0.20	.XXX=±0.10	CHECKED 審查 楊峰	PART NO. 料號		DWG NO. 圖號	PE0604A			LVDS CONNECTOR			
1	2	3		4		5		6		7		8		9							