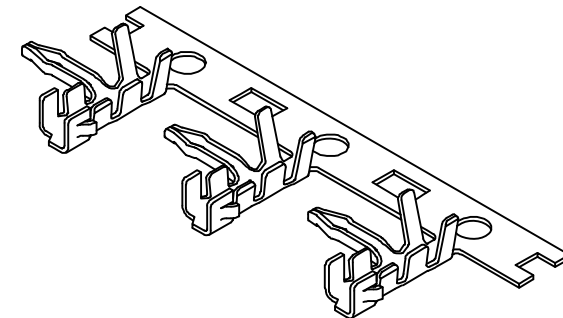
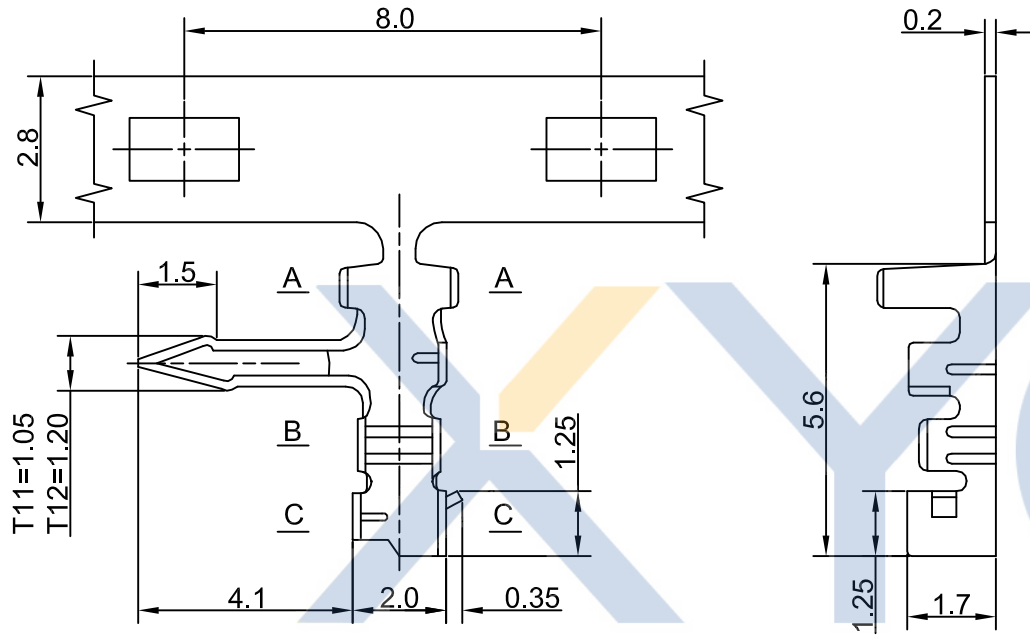


DRAWING FOR CUSTOMER



KB948-X X T 3 A

1:All plated
2:Half plated

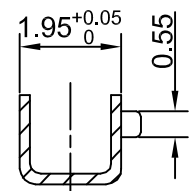
Version

Mold No.

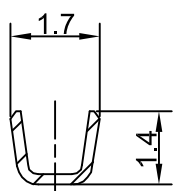
Terminal

Plating
0: Tin-plat
1: Gold Plat1u"
2: Gold Plat3u"
3: Gold Plat5u"

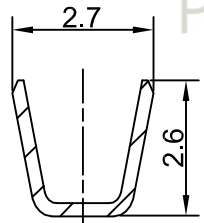
- SPEC.:
- Rated Voltage:50V AC,DC
 - Rated Current:2.0A AC,DC
 - Withstand Voltage:800V AC/minute
 - Insulation Resistance:1000MΩ min
 - Temperature Range:-25℃~+85℃
- Terminal
- Material:Phosphor Bronze
 - Finish:Tin-plated,over Nickel
 - Applicable wire:AWG#28~22
 - QTY.:8000PCS/Reel



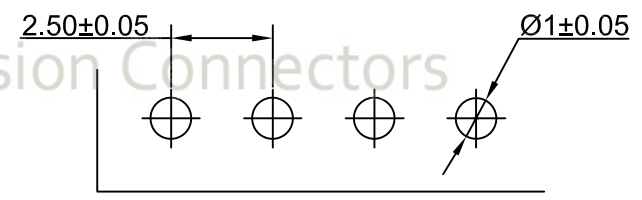
C-C



B-B



A-A



P.C.B LAYOUT

XYCO PRECISION CONNECTORS

TEL: 0769-8297 9981/2/3 <http://www.XYCO.com.cn>

					TOLERANCE 公差	DRAWING 設計者	John	KB948-XXT3A			
2015-08-20	A	CHANGE HISTORY 變更歷史	KB948-XXT3A	John	.X=±0.25	CHECKED 審查	Thomas	PART NO. 料號			
DATE 日期	VER 版本				.XX=±0.13	APPROVED 核准	William	DWG NO. 圖號	PE1901006A	UNIT 單位	mm
					.XXX=±0.08					PRODUCT NAME 產品名稱	JC25-T Wire To Board Terminal



UNIT 單位 mm

PRODUCT NAME 產品名稱

JC25-T Wire To Board Terminal