

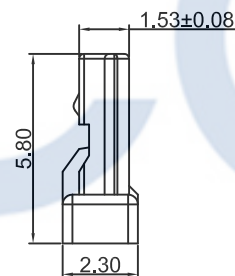
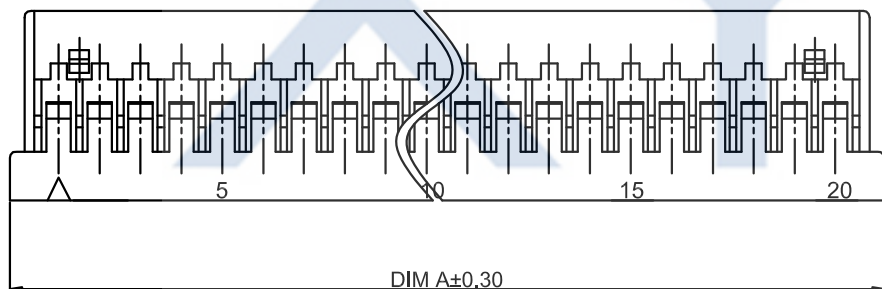
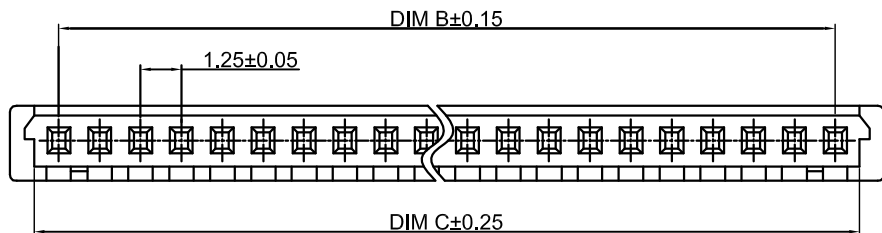
DRAWING FOR CUSTOMER

- SPEC.:
- Voltage Rating:150V AC/DC
 - Current Rating:1A AC/DC
 - Withstanding Voltage:500V AC/minute
 - Contact Resistance:20mΩ max
 - Insulation Resistance:500MΩ min
 - Temperature Range:-35°C~+85°C

- Material:
- Insulator:PA66 UL94V-0
 - Color:Gray

KB912-X X H 1 B

Part No. Version
Housing Mold No.



Poles	Dimensions(mm)		
	A	B	C
02	4.40	1.25	2.90
03	5.65	2.50	4.15
04	6.90	3.75	5.40
05	8.15	5.00	6.65
06	9.40	6.25	7.90
07	10.65	7.50	9.15
08	11.90	8.75	10.40
09	13.15	10.00	11.65
10	14.40	11.25	12.90
11	15.65	12.50	14.15
12	16.90	13.75	15.40
13	18.15	15.00	16.65
14	19.40	16.25	17.90
15	20.65	17.50	19.15
20	26.90	23.75	25.40
25	33.15	30.00	31.65
30	39.40	36.25	37.90

XYCO 东莞市轩业电子科技有限公司
TEL: 0769-8297 9981/2/3 http://www.XYCO.com.cn

2017-05-15	B	优化尺寸	KB912-XXH1B	Devin	TOLERANCE 公差	DRAWING 設計者	Devin	KB912-XXH1B	
2014-06-26	A		KB912-XXH1A	Devin	.X=±0.30 .XX=±0.20 .XXX=±0.10	CHECKED 審查	Thomas	PART NO. 料號	
DATE 日期	VER 版本	CHANGE HISTORY 變更歷史	CHANGED NAME 修改後料號	DRAWING 變更者		APPROVED 核准	William	DWG NO. 圖號	PE2910A

UNIT 單位	mm	PRODUCT NAME 產品名稱	DF14 PH1.25mm Wire To Board Housing
------------	----	----------------------	--