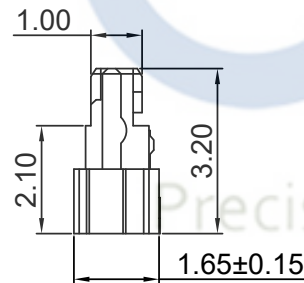
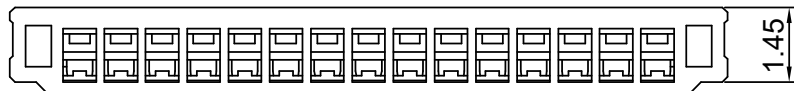
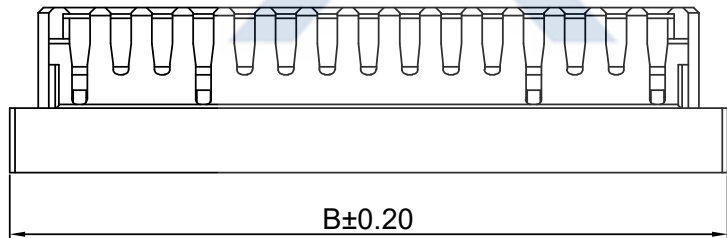
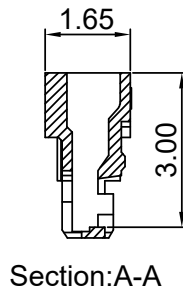
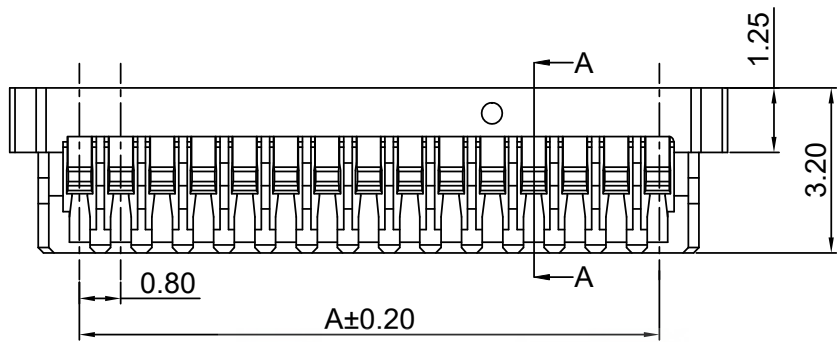


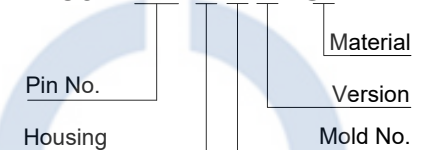
DRAWING FOR CUSTOMER



- SPEC.:
- Rated Voltage: 30V AC,DC
 - Rated Current:0.5A AC,DC
 - Withstand Voltage: 200V AC/minute
 - Contact Resistance: 20mΩ max
 - Insulation Resistance: 100MΩ min
 - Temperature Range: -25°C~+85°C

- Material:
- Insulator:C2-LCP UL94V-0

KB804-X X H 4 A -C2



Poles	Dimensions(mm)	
	A	B
02	0.80	3.50
03	1.60	4.30
04	2.40	5.10
05	3.20	5.90
06	4.00	6.70
08	5.60	8.30
10	7.20	9.90
12	8.80	11.50
14	10.40	13.10
16	12.00	14.70
17	12.80	15.50
20	15.20	17.90

XYCO 东莞市轩业电子科技有限公司
 TEL: 0769-8297 9981/2/3 <http://www.XYCO.com.cn>

2018-11-25		A			KB804-XXH4A-C2	Devin	KB804-XXH4A-C2		UNIT		PRODUCT NAME	
DATE	VER	CHANGE HISTORY	CHANGED NAME	DRAWING	TOLERANCE	DRAWING	CHECKED	PART NO.	料號	單位	mm	產品名稱
日期	版本	變更歷史	修改後料號	變更者	.X=±0.30 .XX=±0.20 .XXX=±0.10	設計者	審查	DWG NO.	圖號	mm		DF52 PH0.80mm Wire to Board Housing
1		2	3	4		Devin	Thomas	PE181105A				
						William	核淮					