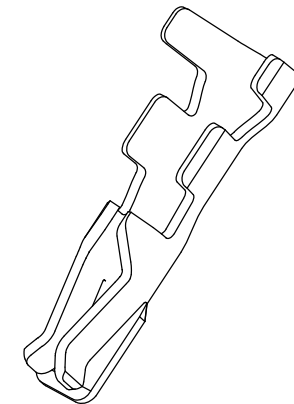
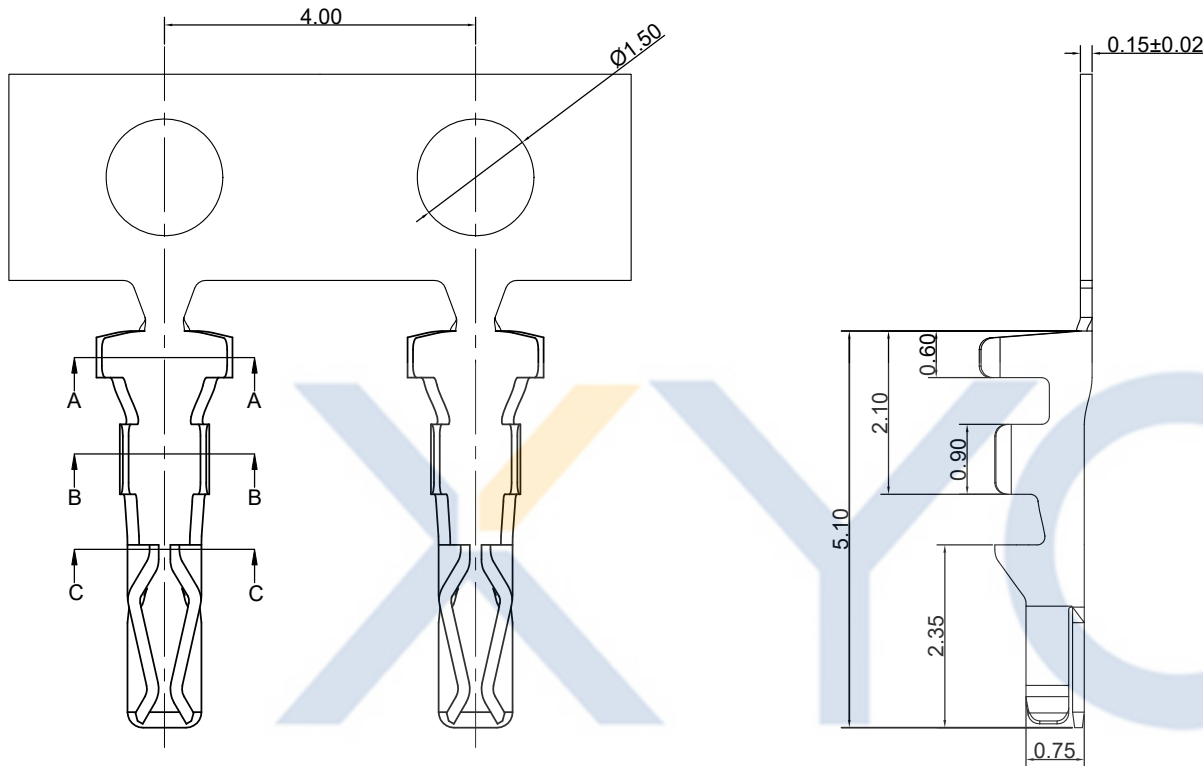
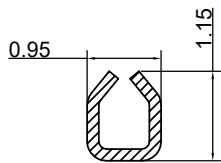


DRAWING FOR CUSTOMER

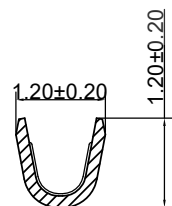


- SPEC.:
- Voltage Rating:150V AC/DC
 - Current Rating:1A AC/DC
 - Withstanding Voltage:500V AC/minute
 - Contact Resistance:20mΩ max
 - Insulation Resistance:500MΩ min
 - Temperature Range:-35°C~+85°C

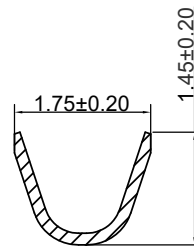
- Terminal:
- Material:Phosphor Bronze
 - Finish: Tin/Gold-Plated, over Nickel
 - Applicable wire:AWG#26~32
 - QTY.:15KPCS/plate



Section:C-C



Section:B-B



Section:A-A

KB912-XXTL1A

- 1:All plated
2:Half plated
- Plating
0: Tin-plat
1: Gold Flash
2: Gold Plat 3u"
3: Gold Plat 5u"
- Version
Mold No.
With Lock
Terminal

XYCO 东莞市轩业电子科技有限公司
TEL: 0769-8297 9981/2/3 http://www.XYCO.com.cn

				TOLERANCE 公差		DRAWING 設計者		Devin		KB912-XXTL1A					
2018-08-18		A		新版发行		KB912-XXTL1A		Devin		PART NO. 料號		UNIT 單位		mm	
DATE 日期		VER 版本		CHANGE HISTORY 變更歷史		CHANGED NAME 修改後料號		DRAWING 變更者		DWG NO. 圖號		PE1808012A		PRODUCT NAME 產品名稱	
														DF14 PH1.25mm Wire To Board Terminal with Lock	

				.X=±0.30 .XX=±0.20 .XXX=±0.10		CHECKED 審查		Thomas							
						APPROVED 核准		William							